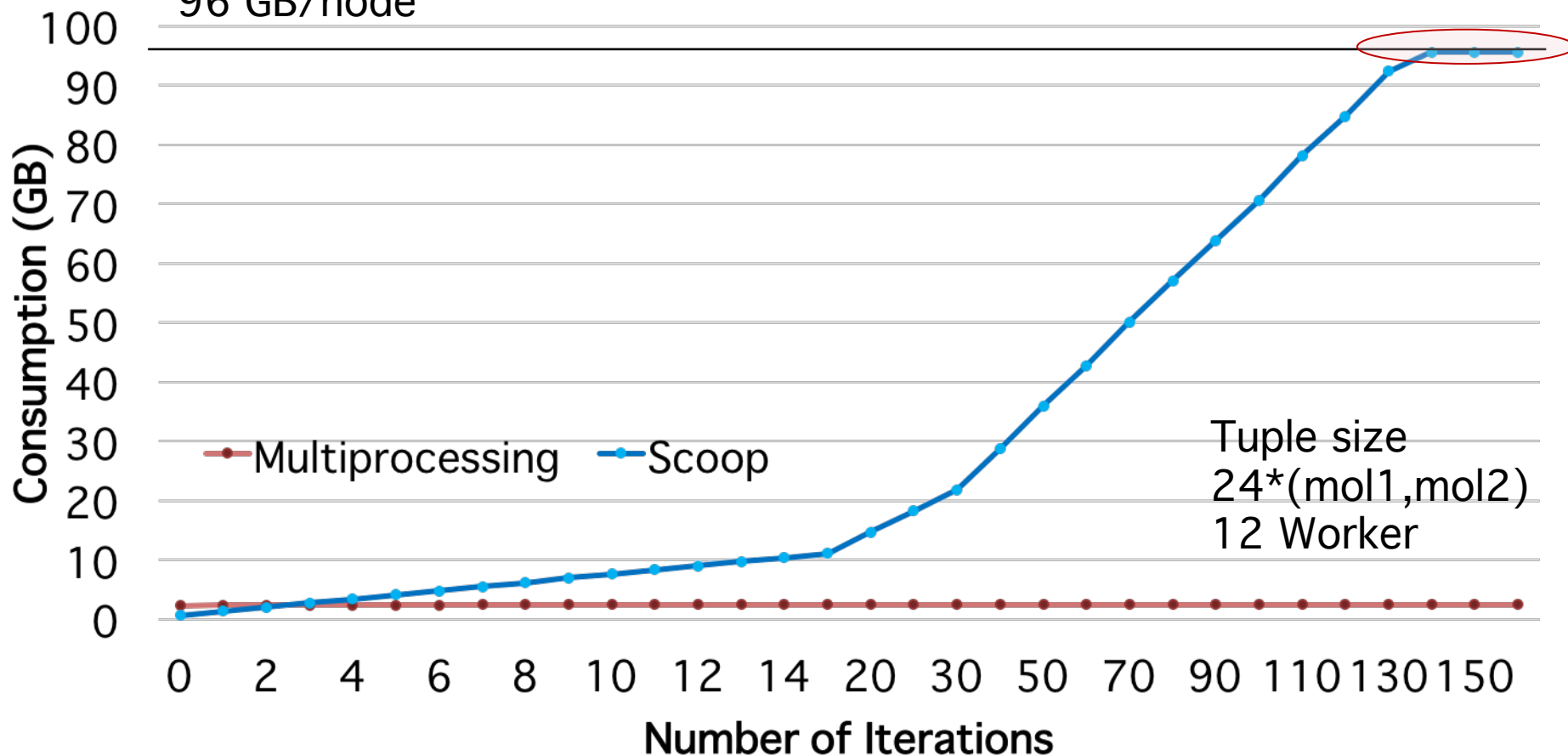


Testcase - Memory Profiling

Node03 RMG server
96 GB/node

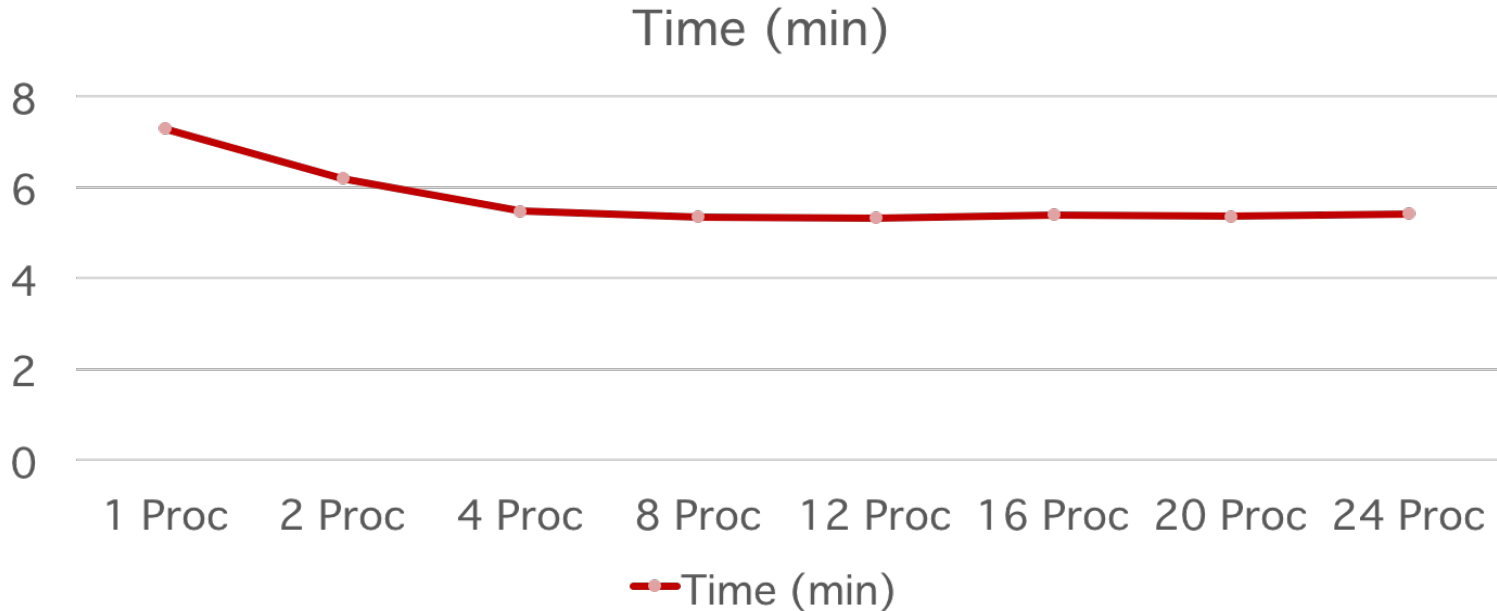


Minimal Example - Scaling

Ethane pyrolysis

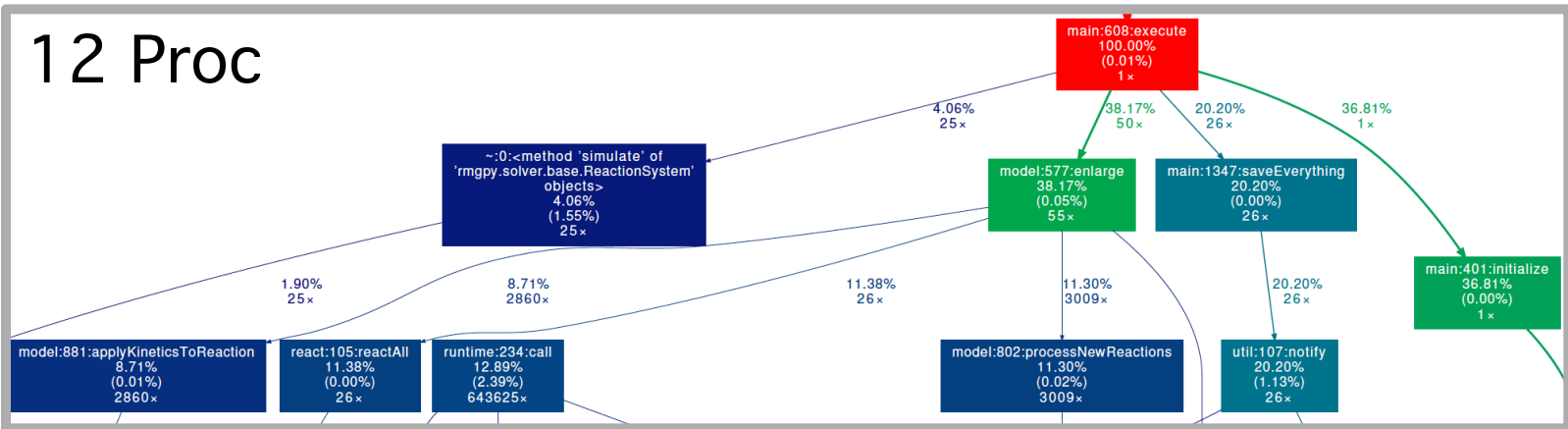
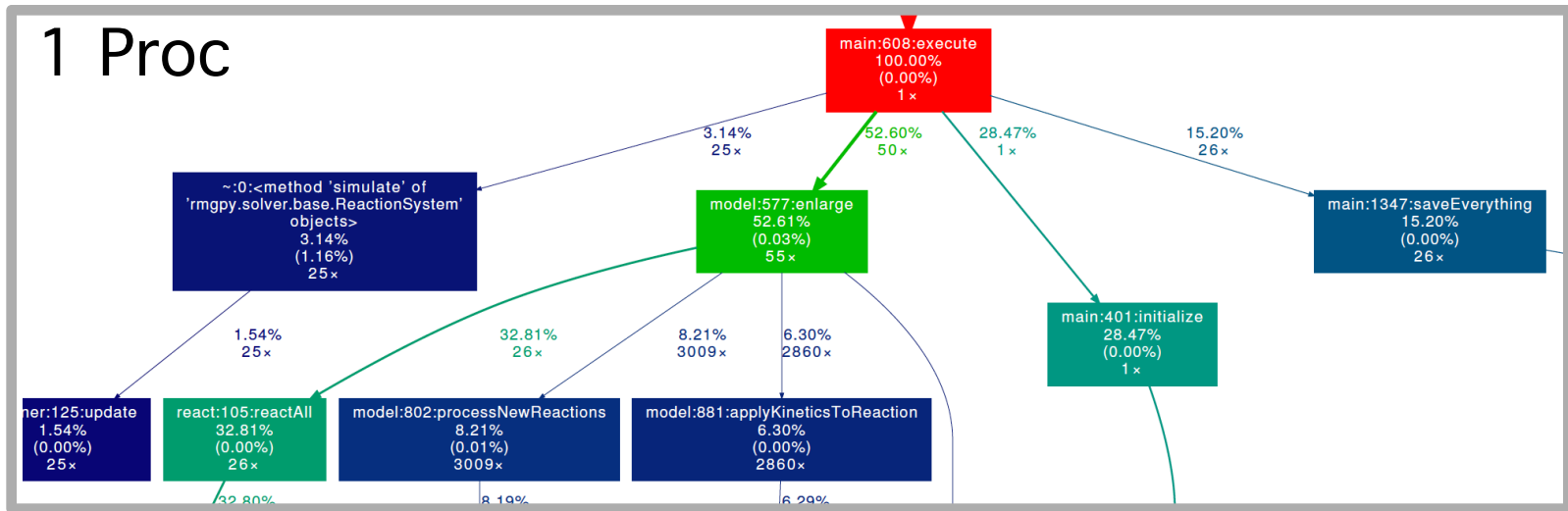
RMG-Server

Node 4 - 12 cores/node

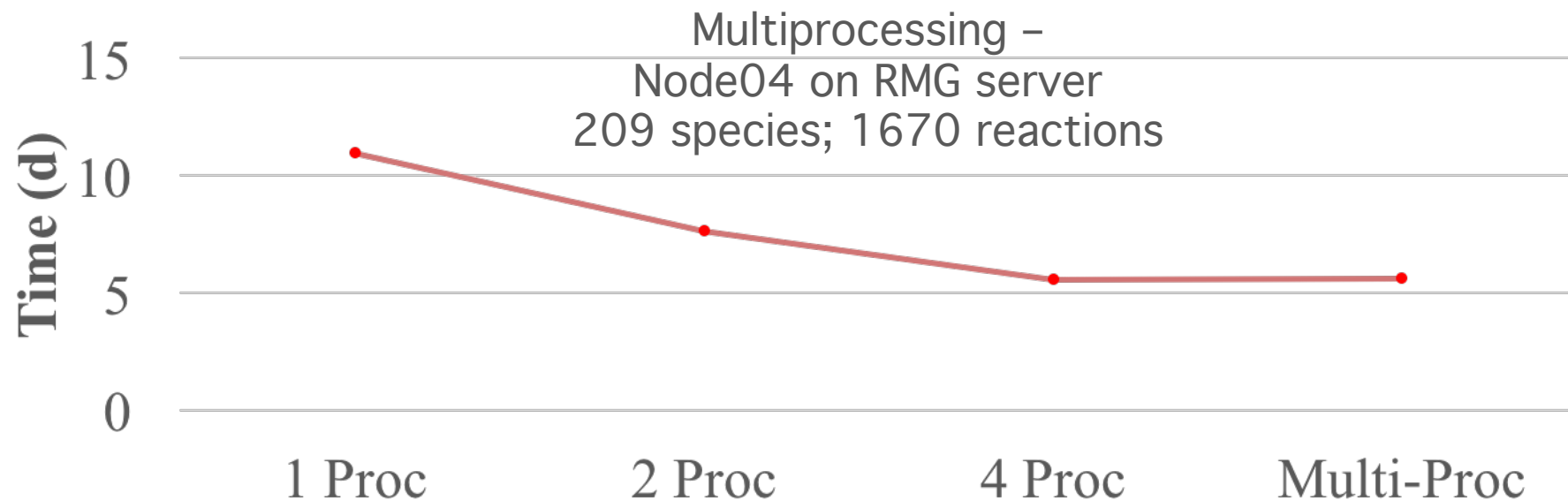
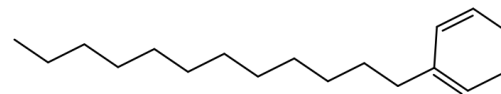


Minimal Example - Scaling

Ethane pyrolysis



PDD Testcase



- Multiprocessing is **forking** the base process
- Memory limit (SWAP + RAM) might be exceeded using too many processors for a base process large in memory
- **Number of processes** is determined by
$$\frac{\text{available RAM}}{\text{RAM used by RMG base process}}$$
- Python 3: new forking contexts 'spawn' and 'forkserver' are available