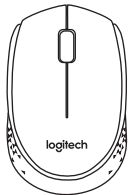
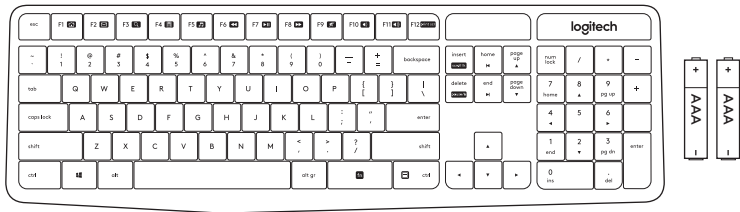


logitech®

MK235



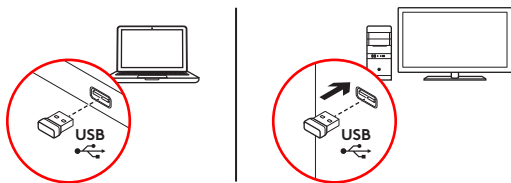
Setup Guide | Guide d'installation



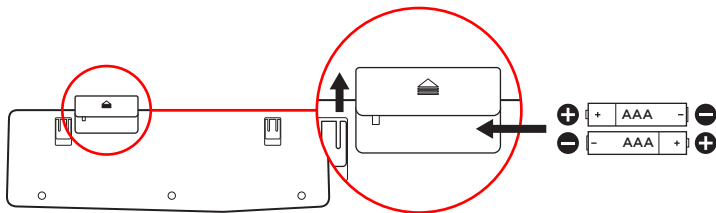
Languages

English	4
Français	8
Español.	12
Português	16

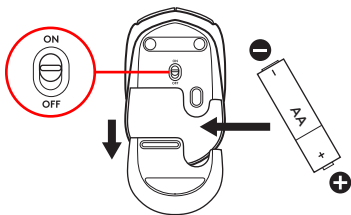
1



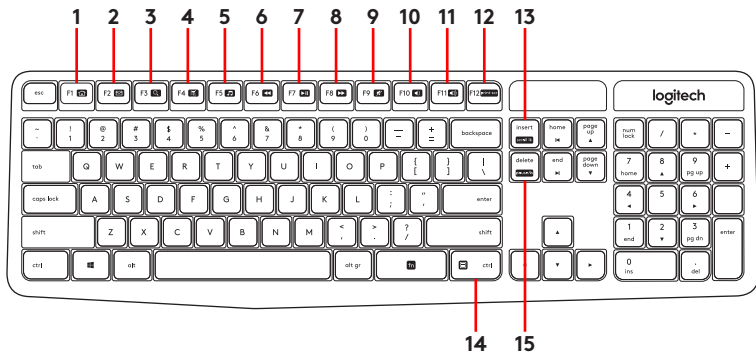
2



3



Keyboard features

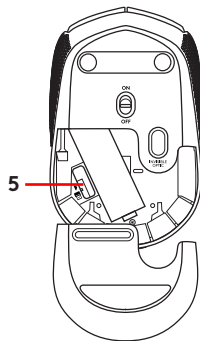
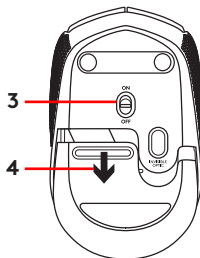
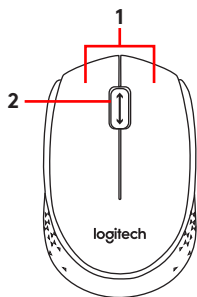


Hotkeys

Access the functions below by pressing Fn + the respective hotkey:

- | | | |
|------------------------|------------------------|-------------------------|
| 1. Internet | 6. Backward | 11. Volume up |
| 2. Email | 7. Play/Pause | 12. Print screen |
| 3. Search | 8. Forward | 13. Scroll lock |
| 4. Calculator | 9. Mute | 14. Pause/Break |
| 5. Music player | 10. Volume down | 15. Menu |

Mouse features



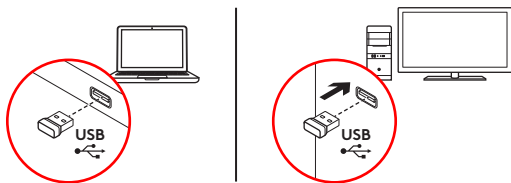
- 1.** Left and right mouse buttons
- 2.** Scroll wheel
Press the wheel down for middle button (function can vary by software application)

- 3.** On/Off slider switch
- 4.** Battery door release
- 5.** USB Nano-receiver storage

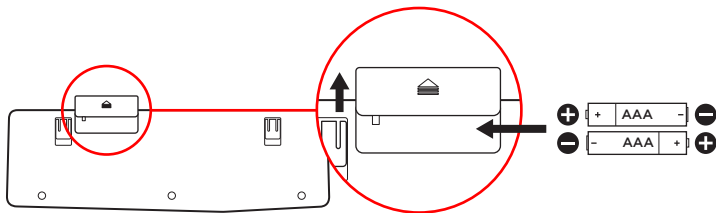
Help with setup: keyboard and mouse are not working

- Check the orientation of the batteries inside the keyboard and mouse, or replace the batteries.
- Is the USB receiver securely plugged into a computer USB port? Try moving the USB receiver to a USB port closer to the keyboard and mouse.
- If the USB receiver is plugged into a USB hub, try plugging it directly into your computer.
- Remove any metal object between the receiver and the keyboard/mouse that may interfere with reception. Try using the mouse on a different surface.
- Restart the computer.
- If these suggestions don't work, download the Reconnection Utility from www.logitech.com/connect_utility.

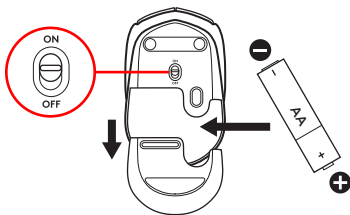
1



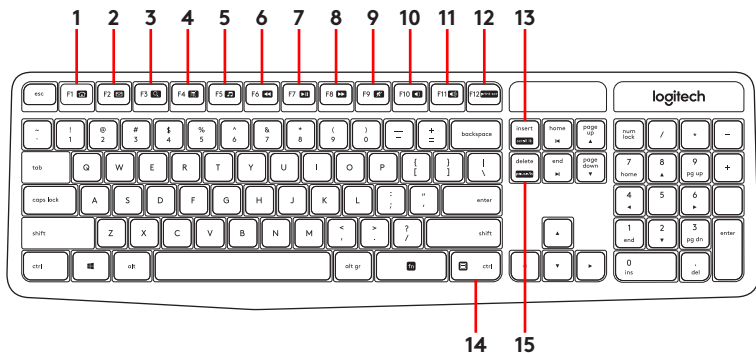
2



3



Fonctionnalités du clavier

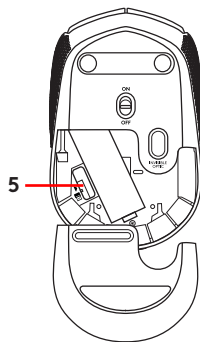
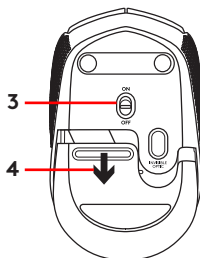
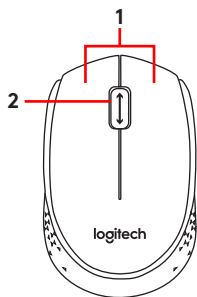


Raccourcis clavier

Accédez aux fonctions ci-dessous en appuyant sur Fn et la touche de raccourci respective:

- | | | |
|--------------------------------|-------------------------|---------------------------------------|
| 1. Internet | 6. Arrière | 11. Volume + |
| 2. Adresse électronique | 7. Lecture/Pause | 12. Impression d'écran |
| 3. Recherche | 8. Suivant | 13. Verrouillage du défilement |
| 4. Calculatrice | 9. Muet | 14. Pause/Attn |
| 5. Lecteur de musique | 10. Volume - | 15. Menu |

Fonctions de la souris



1. Boutons gauche et droit de la souris

2. Roulette de défilement

Appuyez sur la roulette pour l'utiliser comme bouton central (la fonction varie suivant l'application logicielle).

3. Commutateur Marche/Arrêt

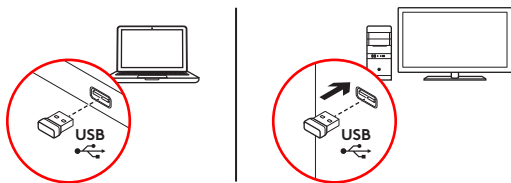
4. Bouton d'ouverture du compartiment des piles

5. Compartiment de stockage du nano-récepteur USB

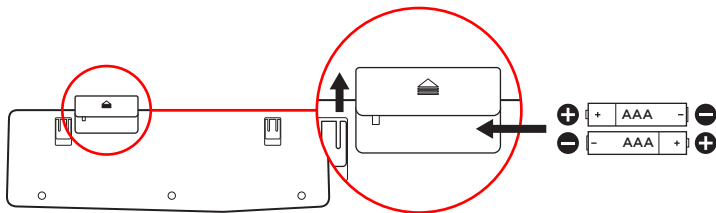
Aide à la configuration: le clavier et la souris ne fonctionnent pas

- Vérifiez l'orientation des piles dans le clavier et la souris ou remplacez-les.
- Le récepteur USB est-il correctement branché sur un port USB de l'ordinateur? Essayez de brancher le récepteur USB dans un port USB plus proche du clavier et de la souris.
- Si le récepteur USB est branché dans un hub USB, branchez-le plutôt directement sur l'ordinateur.
- Retirez tout objet métallique situé entre le récepteur et l'ensemble clavier/souris et susceptible de causer des interférences à la réception du signal. Essayez d'utiliser la souris sur une surface différente.
- Redémarrez l'ordinateur.
- Si ces suggestions ne fonctionnent pas, téléchargez l'utilitaire de reconnexion à l'adresse suivante: www.logitech.com/connect_utility.

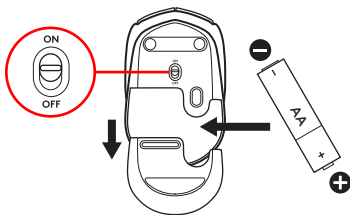
1



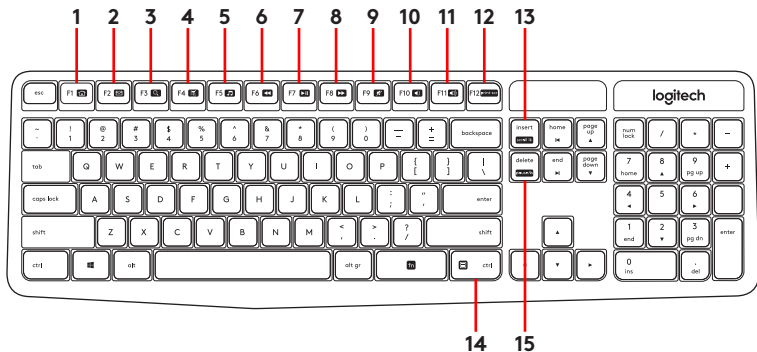
2



3



Características del teclado

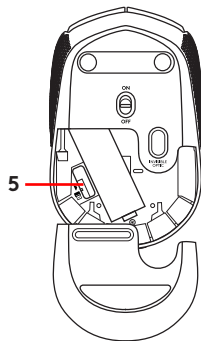
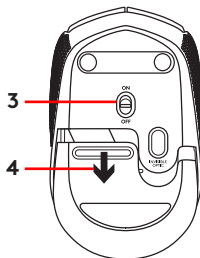
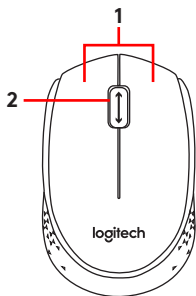


Botones de acceso rápido

Accede a las siguientes funciones mediante la pulsación de la tecla Fn + el acceso rápido respectivo:

- | | | |
|---------------------------------|----------------------------|--------------------------------------|
| 1. Internet | 6. Atrás | 11. Subir volumen |
| 2. Correo electrónico | 7. Reproducir/Pausa | 12. Imprimir pantalla |
| 3. Buscar | 8. Avance | 13. Bloqueo de desplazamiento |
| 4. Calculadora | 9. Silencio | 14. Pausa/Interrupción |
| 5. Reproductor de música | 10. Bajar volumen | 15. Menú |

Características del mouse

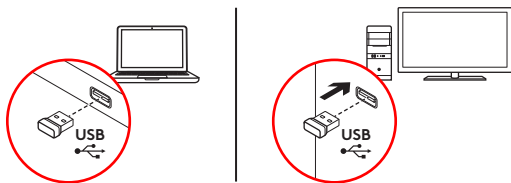


- 1.** Botones izquierdo y derecho
- 2.** Botón rueda
Pulsa el botón rueda para usarlo como botón central (la función puede variar según la aplicación de software).
- 3.** Conmutador de encendido/apagado
- 4.** Botón de compartimento de baterías
- 5.** Almacenamiento del nano receptor USB

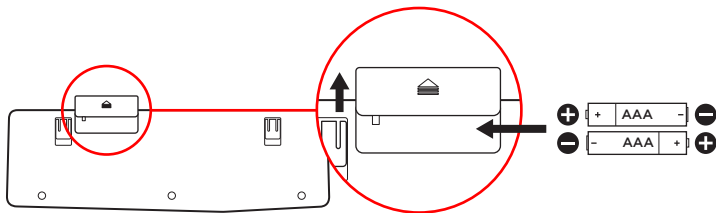
Ayuda con la instalación: El teclado y el mouse no funcionan

- Comprueba la orientación de las baterías dentro del teclado y del mouse o sustitúyelas.
- ¿Está el receptor USB conectado correctamente a un puerto USB de la computadora? Lleva el receptor USB a un puerto USB más cercano al teclado y al mouse.
- Si el receptor USB está conectado a un concentrador USB, conéctalo directamente a la computadora.
- Retira cualquier objeto metálico situado entre el receptor y el teclado y el mouse que pueda afectar a la recepción. Usa el mouse en otra superficie.
- Reinicia la computadora.
- Si estas sugerencias no funcionan, descarga la Utilidad de reconexión de www.logitech.com/connect_utility.

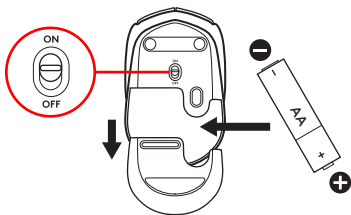
1



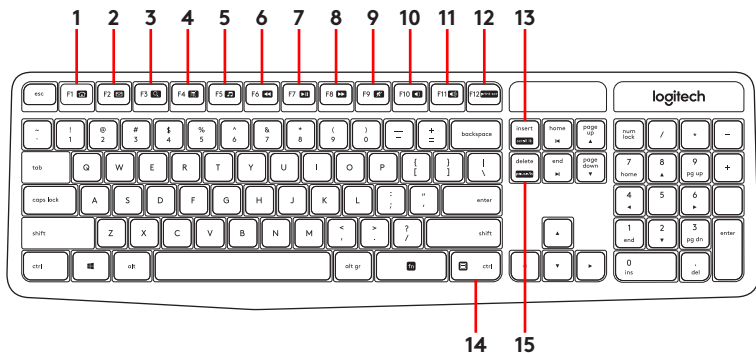
2



3



Recursos do teclado

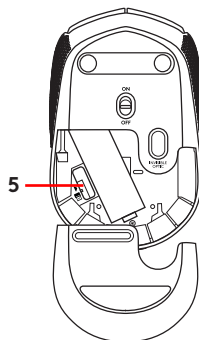
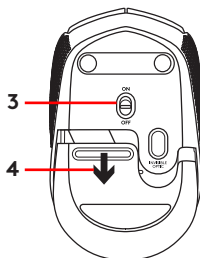
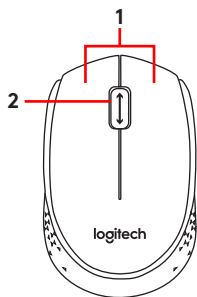


Teclas de acesso

Acesse as funções abaixo pressionando Fn + o respectivo atalho:

- | | | |
|----------------------------|-----------------------------|-------------------------|
| 1. Internet | 6. Backward (Recuar) | 11. Mais volume |
| 2. E-mail | 7. Reproduzir/Pausar | 12. Print Screen |
| 3. Pesquisa | 8. Avançar | 13. Scroll Lock |
| 4. Calculadora | 9. Sem áudio | 14. Pausar/Parar |
| 5. Player de música | 10. Menos volume | 15. Menu |

Recursos do mouse



1. Botões esquerdo e direito do mouse

2. Roda de rolagem

Pressione a roda para acionar o botão do meio (a função varia conforme o aplicativo de software)

3. Controle deslizante para ligar/desligar

4. Liberação da porta do compartimento das pilhas

5. Armazenamento do receptor Nano USB

Ajuda para a instalação: o teclado e o mouse não funcionam

- Verifique a orientação das pilhas no interior do teclado e do mouse, ou substitua as pilhas.
- O receptor USB está conectado corretamente a uma porta USB do computador? Experimente mover o receptor USB para uma porta USB mais próxima do teclado e do mouse.
- Se o receptor USB estiver conectado a um concentrador USB, tente conectá-lo diretamente ao computador.
- Remova quaisquer objetos de metal entre o receptor e o teclado ou o mouse que possam interferir na recepção. Tente usar o mouse em outra superfície.
- Reinicie o computador.
- Se estas sugestões não funcionarem, faça o download do Utilitário de reconexão em www.logitech.com/connect_utility.



www.logitech.com

© 2016 Logitech. Logitech, Logi and other Logitech marks are owned by Logitech and may be registered. All other trademarks are the property of their respective owners. Logitech assumes no responsibility for any errors that may appear in this manual. Information contained herein is subject to change without notice.

© 2016 Logitech. Logitech, Logi et les autres marques Logitech sont la propriété de Logitech et sont susceptibles d'être déposées. Toutes les autres marques sont la propriété exclusive de leurs détenteurs respectifs. Logitech décline toute responsabilité en cas d'erreurs susceptibles de s'être glissées dans le présent manuel. Les informations énoncées dans ce document peuvent faire l'objet de modifications sans préavis.

621-000701.002